

ROSS SEA EXPLORATION
ONBOARD PONANT'S LE SOLÉAL
24 NIGHT PACKAGE | DUNEDIN TO HOBART

Exclusive
CRUISECO INCLUSIONS

FREE RETURN FLIGHTS
FROM SYD/MEL/ BNE/ADL*



ONBOARD CREDIT
€150 PER PERSON*



from **\$32,955***
per person twin share

FULLY ESCORTED JOURNEY
20 JANUARY - 13 FEBRUARY 2023



Zodiac® excursion, Ross Sea

Embark on an extraordinary adventure to the seldom visited Ross Sea from New Zealand, and walk in the footsteps of legendary polar explorers on this exciting expedition.

Sailing from Dunedin in New Zealand on board Le Soléal, start in Campbell Island, part of New Zealand's Subantarctic Islands, and discover the island's spectacular endemic flora and fauna, including six species of albatross.

Whilst you enjoy some time at sea and take advantage of talks and lectures on board by your team of expedition guides, be prepared to reach the Ross Sea, the Southernmost sea on Earth.

Alongside your expedition team, you will have the privilege of exploring this fascinating region and learn all about its history and natural environment, all in one of the most pristine, spectacular settings. Observe the largest Adelie penguin rookeries in the world, sail past gigantic icebergs and thundering glaciers during a Zodiac® excursion, or spot Weddell Seals as they relax or hunt on icefloes.

You will have the chance to visit historic buildings including Sir Ernest Shackleton's hut at Cape Royds and reflect on the heroic polar journeys of some of the world's most intrepid polar explorers.

On your way back, enjoy some time on Australia's Macquarie Island, and its impressive colony of king penguins, before disembarking in Hobart. A truly memorable adventure not many have the chance to experience!



Le Soléal

EXCLUSIVE CRUISECO PACKAGE INCLUSIONS:

- **FREE** Return Airfares - One-way outbound flight from Australia SYD/MEL/BNE/ADL to Dunedin on Air New Zealand & one-way return flight from Hobart to SYD/MEL/BNE/ADL on Virgin Australia
- €150 Onboard Credit per person (maximum of €300 per stateroom)
- Airport Transfers – On arrival from Dunedin airport to hotel & on departure from cruise terminal in Hobart to airport
- 2 nights pre cruise accommodation at Distinction Hotel Dunedin including breakfast
- Hosted 2 hour welcome cocktail function at hotel to meet and mingle with other group guests
- Hotel to cruise terminal transfer in Dunedin
- Private Cocktail Party with Captain & Expedition Manager and Group Host
- Welcome Aboard bottle of Veuve Clicquot in stateroom
- Friendly host from CruiseCO to escort you on your expedition

CRUISE INCLUSIONS

- 22 night cruise on Le Soléal from Dunedin to Hobart including:
 - All meals while on board the ship
 - Unlimited Wi-Fi
 - Port charges
 - Open Bar including pouring wines, house champagne, alcohol excluding premium brands
 - Evening entertainment and events
 - 24-hour room service
 - Excursions with Expedition Guides



The Panoramic Lounge - Deck 6, Le Soléal

PRICE PER PERSON TWIN SHARE

CATEGORY

Superior Stateroom	\$32,955
Deluxe Stateroom	\$35,675
Prestige Stateroom – Deck 4	\$39,535
Prestige Stateroom – Deck 5	\$41,475
Prestige Stateroom – Deck 6	\$43,795
Deluxe Suite	\$60,785
Prestige Suite – Deck 5	\$65,805
Prestige Suite – Deck 6	\$69,295



Emperor Penguins



"We are privileged guests in these remote lands where we are at the mercy of weather, ice, tidal and current conditions. Landings on certain sites and the observation of certain wildlife cannot be guaranteed. They vary from day to day, making each PONANT cruise a unique experience. The Captain and the Expedition Leader will make every effort to ensure that your experience is as rich as possible, while complying with the safety rules and instructions imposed by the IAATO."



Larnach Castle, Dunedin, New Zealand

Ross Sea Exploration Dunedin to Hobart

Le Soléal | 24 night cruise package
20 January – 13 February 2023

This package, exclusively designed by Cruiseco, is a once-in-a-lifetime opportunity to experience a different and distinctive type of holiday, a concept of travel that is intimate, luxurious and authentic.

Itinerary

Day 1: Welcome to Dunedin

Fri 20 Jan 2023

You will be met on arrival at Dunedin Airport and transferred to your accommodation.

This evening is at leisure.

Overnight: Distinction Hotel

Day 2: Dunedin

Sat 21 Jan 2023

Today is free for you to explore the sights of Dunedin.

New Zealand's oldest city, Dunedin is often referred to as the Edinburgh of New Zealand. This city of the south wears its Scottish heritage with pride and features some of the best preserved Victorian and Edwardian architecture in the Southern Hemisphere. The Silverpeaks hinterland to the North West provides a picturesque backdrop and The Otago Peninsula, which lies within the city boundaries, has internationally renowned wildlife reserves, including the only mainland breeding colony of Northern Royal Albatross.

Tonight, meet your fellow travellers and tour leader at our welcome cocktail function.

Overnight: Distinction Hotel

Meals: Breakfast

Day 3: Depart Dunedin

Sun 22 Jan 2023 | Depart 5:00pm

Enjoy a lazy morning or continue your exploration of Dunedin.

This afternoon, you will be transferred to Dunedin cruise terminal to board Le Soléal. Embarkation will commence from 3pm. The ship will depart at 5pm.

Farewell New Zealand as your ship sets sail for the frozen land.

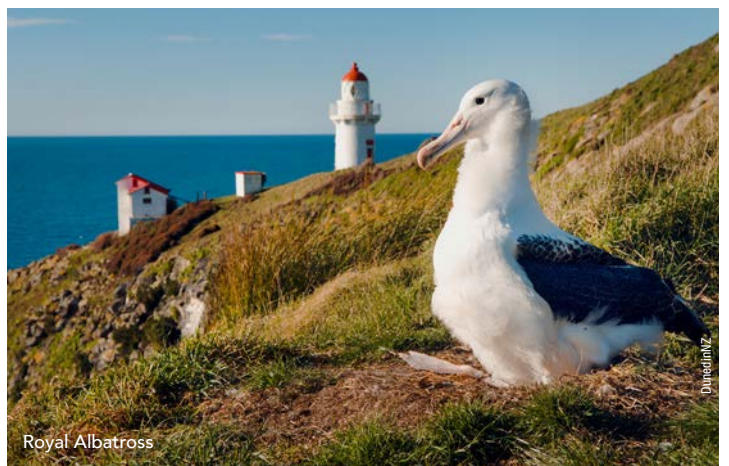
Meals: Breakfast and Dinner



The Otago Peninsula, New Zealand



Campbell Island



Royal Albatross

Day 4: At Sea

Mon 23 Jan 2023

During your days at sea, make the most of the many services and activities on board. Treat yourself to a moment of relaxation in the spa or stay in shape in the fitness centre. Depending on the season, let yourself be tempted by the swimming pool or a spot of sunbathing. This day without a port of call will also be an opportunity to enjoy the conferences or shows proposed on board, to do some shopping in the boutique or to meet the PONANT photographers in their dedicated space. As for lovers of the open sea, they will be able to visit the ship's upper deck to admire the spectacle of the waves and perhaps be lucky enough to observe marine species. A truly enchanted interlude, combining comfort, rest and entertainment.

Day 5: Campbell Island

Tue 24 Jan 2023

Campbell Island is the most southerly of the five New Zealand Subantarctic groups. Described by the English botanist Joseph Hooker as having a "flora display second to none outside the tropics." It is known for its megaherbs, herbaceous, perennial wildflowers characterised by their great size, with huge leaves and very colourful flowers, which have developed as an adaptation to the harsh weather conditions on the islands. Campbell Island is also home to six species of albatross and several critically endangered endemic birds, including the Campbell Island teal and snipe. You will have the opportunity to undertake a guided walk on the Col Lyell Saddle boardwalk as well as undertake a zodiac tour around the coastline of Perseverance Harbour.

Days 6 – 9: At Sea

Wed 25 – Sat 28 Jan 2023

Described as the very heart of Antarctica and the gateway to the South Pole, a voyage to the Ross Sea is an insight into the Heroic age of Antarctic exploration and an experience available to only a select few. This expedition will also visit the remote Subantarctic Islands on route to the Ross Sea region. A flexible itinerary will allow us to maximise our opportunity to visit the many unique locations the region is famous for. In the true spirit of expedition cruising each day the Captain and Expedition leader will continually update the voyage plan taking into account the weather and sea conditions to ensure a safe and enjoyable experience for all guests.

Day 10: Cape Adare

Sun 29 Jan 2023

Marking the north end of Borchgrevink Coast, Cape Adare was discovered by Captain James Ross in 1841. It is one of the principal sites of early human activity in Antarctica. In January 1895, Norwegian explorers Henrik Bull and Carsten Borchgrevink made the first documented landing on Antarctica at Cape Adare. Borchgrevink returned as the commander of the British Southern Cross Expedition, 1898 - 1900 which became the first expedition to overwinter on the Antarctic mainland. Despite never receiving the heroic status of Scott or Shackleton, Borchgrevink's expedition paved the way for the Heroic Age of Antarctic explorers that followed. Cape Adare is also the site of the largest Adélie penguin rookery in the world, comprising approximately 220,000 breeding pairs. If time and weather permit, you will have the opportunity to view the historic site along with the resident wildlife.



Weddell Seal

Day 11: Cape Hallett

Mon 30 Jan 2023

Located on the Northern tip of the Hallett Peninsula, Cape Hallett was the site of a joint scientific base between the United States and New Zealand established during the International Geophysical Year in 1957-58. The station was manned permanently until 1964, when a fire destroyed the main scientific laboratory, for the next nine years it was used as a summer only base until being completely abandoned in 1973. The Admiralty range, rising over 4,000 metres from the sea with its giant glaciers provides a spectacular backdrop to the large Adélie penguin colony that has reclaimed the site. It is also a regular haul out for Weddell seals. If time and weather permit, you will have the opportunity to land ashore and view the historic site along with the resident wildlife.

Day 12: Terra Nova Bay

Tue 31 Jan 2023

First discovered by Scott during his 1901-1904 Discovery Expedition, the bay was named after one of the relief ships for the expedition. Today, the Italian Zucchelli Station and Jang Bogo Station of South Korea are located at the Northern end of the bay. To the south of the bay lies the massive Drygalski Ice Tongue, extending over 70 kilometres into the Ross Sea from the David Glacier. The David Glacier grounding line, where the ice leaves the shore and begins to float, is in a depth of approximately 1900 metres. The Drygalski Ice Tongue is thought to be at least 4,000 years old and just over 24 kilometres at its widest point. If time and weather permit, you will have the opportunity to explore the spectacular coastal environments from our fleet of zodiacs.



Le Soléal

Day 13: Cape Evans

Wed 1 Feb 2023

Scott's 1911 Terra Nova Hut is the largest historic building in Antarctica. Used in the 1910 to 1913 British Antarctic Expedition, it served as the base for extensive scientific research and surveys as well as Scott's fatal journey to the South Pole. It was this expedition that gave rise to some of the most inspirational and harrowing stories associated with polar history. Ten men of Shackleton's ill-fated Imperial Trans-Antarctic Expeditions were marooned here in 1915 after their ship Aurora was blown out to sea and unable to return. Two of Aurora's anchors remain to this day on the beach in front of the hut. Much of Scott's equipment is well preserved and entering the hut provides a window into the Heroic age of Antarctic exploration. If time and weather permit, you will have the opportunity to view the historic hut along with the resident wildlife.



Sir Ernest Shackleton's Hut, Cape Royds



Chinstrap Penguin

Day 14: Cape Royds

Thu 2 Feb 2023

Shackleton's hut at Cape Royds was constructed during the British Antarctic Nimrod Expedition in 1907-1909, the third British expedition to the Ross Sea region within 10 years. Since being invalidated at home with scurvy in 1903 from Robert Falcon Scott's Discovery expedition, Shackleton was fixated on getting back to the ice. Unable to land at King Edward VII Island, Shackleton entered McMurdo Sound. He had assured Scott that he wouldn't make use of Scott's 1902 Discovery hut at Hut Point, so he selected Cape Royds for the winter quarters. In late 1908 Shackleton led a party of four in an attempt to be the first to reach the Geographic South Pole. After man-hauling sleds for two and a half months, and less than 97 nautical miles from the Pole, he made a decision considered the finest in early polar history – to turn for home. If time and weather permit, you will have the opportunity to view the historic hut along with the resident wildlife.

Day 15: Franklin Island

Fri 3 Feb 2023

Franklin Island is the eroded remnant of a shield volcano lying in the Ross Sea about 130 kilometres east of Cape Hickey, Victoria Land. It was first discovered in 1841 by Captain James Ross whilst attempting to reach the South Magnetic Pole. Ross named the island in honour of the Arctic explorer and then governor of Van Diemen's Land (Tasmania), Sir John Franklin. It is home to several colonies of Adélie penguins and is a regular haul out site for Weddell seals. If time and weather permit, you will have the opportunity to land ashore and view the resident wildlife.

Day 16: Possession Islands

Sat 4 Feb 2023

The Possession Islands are a group of nine islands and islets lying in the western part of the Ross Sea. They were named by Captain James Ross in commemoration of his planting of the British flag and taking possession in the name of the British Sovereign on 12 January 1841. Possession Island and Svend Foyn Island are the two largest islands in the group. Both are home to significant colonies of Adélie penguins. If time and weather permit, you will have the opportunity to view the historic site along with the resident wildlife.

Day 17: At Sea

Sun 5 Feb 2023

Day 18: Balleny Islands

Mon 6 Feb 2023

The Balleny Islands are an extremely remote series of islands extending for about 160 kilometres in a northwest-southeast direction straddling the Antarctic Circle some 270 kilometres north of the Antarctic mainland. The volcanic islands are heavily glaciated and have received few human visitors since their discovery in 1839. Their isolated location within the rich waters of the Southern Ocean has resulted in a species diversity rivalling the entire Ross Sea region. Humpback, fin and minke whales are regular visitors to the rich feeding grounds along with Crabeater, Weddell, elephant and leopard seals. Several of the islands are home to significant colonies of Adélie and Chinstrap penguins. If time and weather permit, you will have the opportunity to explore the spectacular coastal environments and view the prolific wildlife from our fleet of Zodiac®.



Macquarie Island Research Station

Image courtesy of Antarctica.gov.au/Barend (Barry) Bakker



Macquarie Island

Days 19 – 20: At Sea

Tue 7 – Wed 8 Feb 2023

Days 21 - 22: Macquarie Island

Thu 9 – Fri 10 Feb 2023

Long celebrated as one of the wonder spots of the world, Macquarie Island is an island of great beauty and outstanding natural diversity, a breeding place for more than 3.5 million seabirds, most of which are penguins. There are four species breeding on Macquarie Island: Royals, Kings, Gentoos and Rock Hoppers. There are also three types of fur seals and one seventh of the world's population of elephant seals breeding on the island. In 1948 The Australian National Antarctic Research Expeditions established its expedition headquarters on Macquarie Island. If time and weather permit, you will have the opportunity to land ashore and view the prolific wildlife that resides here.

Days 23 – 24: At Sea

Sat 11 – Sun 12 Feb 2023

Day 25: Hobart

Mon 13 Feb 2023 | Arrive 7.00am

After breakfast you will commence disembarkation from 9.00am. You will be transferred from the cruise terminal to Hobart Airport for your flight home.



Gentoos Penguins, Macquarie Island

Image courtesy of Antarctica.gov.au/Andrea Turbett

Welcome aboard Le Soléal

Simplicity, refinement
and a unique atmosphere

Le Soléal is a superb mega-yacht with 132 luxuriously appointed cabins and suites.

Aboard Le Soléal guests encounter a chic and elegant yacht-like ambiance, refined and personalised service as well as gastronomic cuisine.

Discover your stateroom

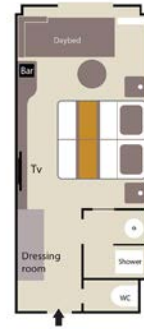
Each stateroom offers elegance and stylishness, decorated by French interior designers

Stateroom amenities include:

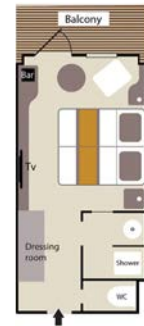
- Individually-controlled air-conditioning
- Stateroom layout: king-size bed, or twin beds, communicating Stateroom available (children welcome)
- Mini bar
- Nespresso Machine
- Flat screen satellite TV
- iPod™ players
- Desk with stationery
- Safe
- French bath products
- Dressing table, bath robes, hair dryer
- Direct line telephone
- 110V American (two flat pins) /220V European (round socket switch two round pins)
- 24 hour room service
- Internet access Wi-Fi

Staterooms & Suites

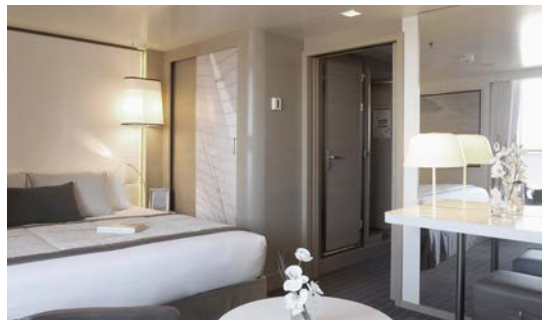
SUPERIOR STATEROOM



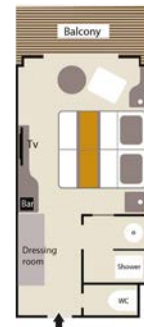
DELUXE STATEROOM



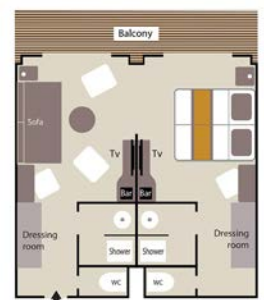
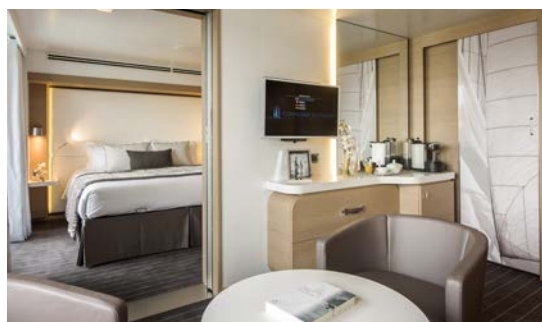
DELUXE SUITE

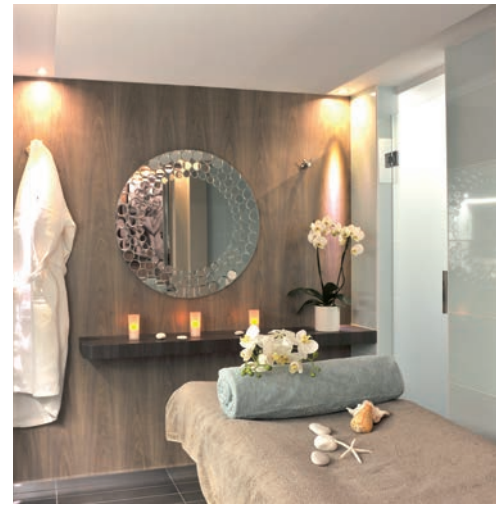


PRESTIGE STATEROOM DECKS 4, 5 & 6

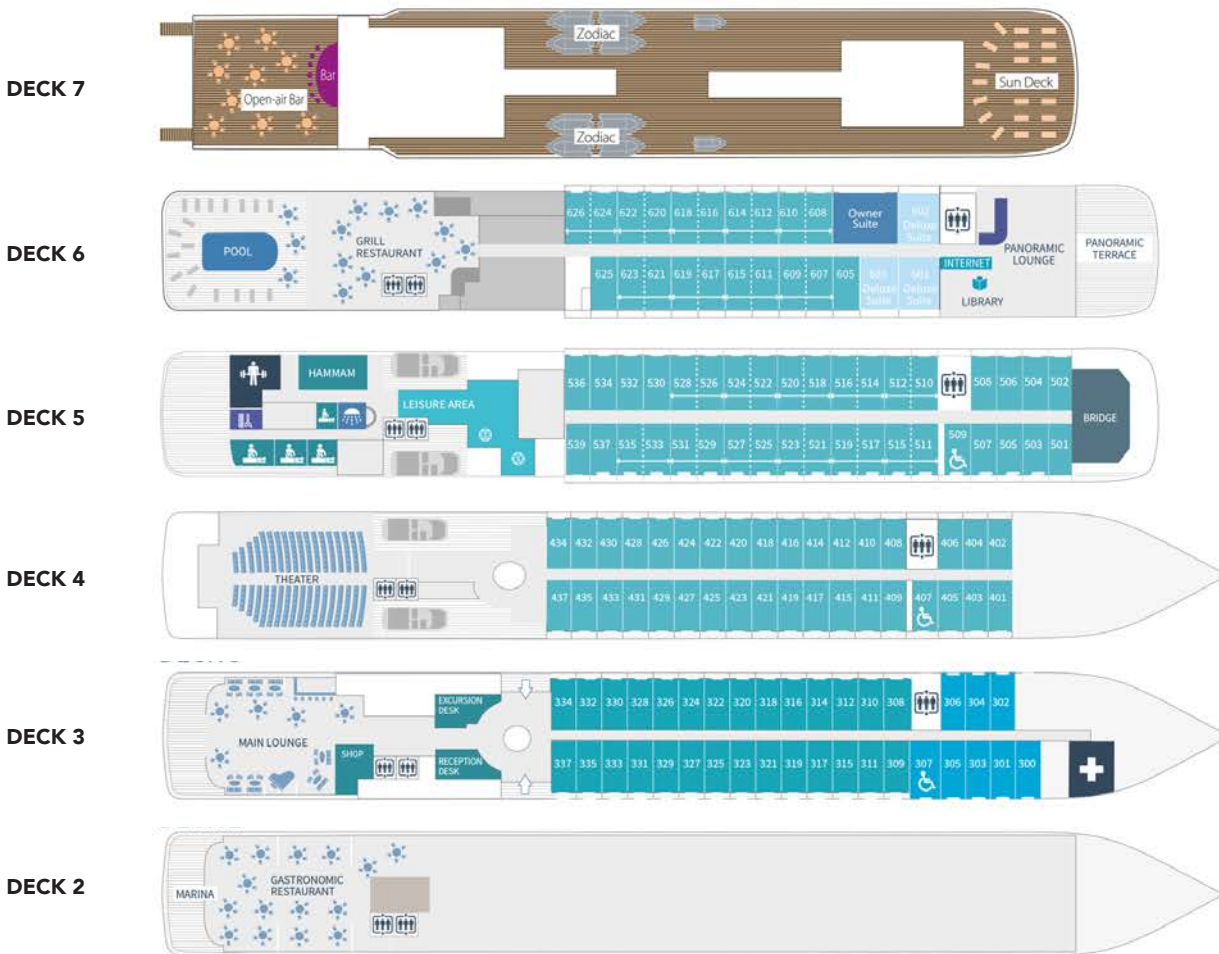


PRESTIGE SUITE DECKS 5 & 6





Deck Plans



DECK 7:

Open-air bar – Sun deck

DECK 6:

Owners's suite – 3 Deluxe suites with private balcony – 20 Prestiges staterooms with private balcony (with 18 Prestige staterooms convertible into 9 Prestige suites)

DECK 5:

37 Prestige staterooms with private balcony (with 22 Prestige staterooms convertible into 11 Prestige suites) – Fitness – PONAT Yach Spa (Balneo, Hammam, Massage, Hairdresser) – Relaxation room – Image & photo deck – Bridge

DECK 4:

35 Prestige staterooms with private balcony – Theater

DECK 3:

28 Deluxe staterooms with private balcony – 8 Superior staterooms – Main lounge – Shop – Reception desk – Excursion desk – Medical center

DECK 2:

Gastronomic Restaurant – Marine

Owner's suite Deck 6

Prestige suites Deck 6-5

Prestige staterooms Deck 4-5-6

Deluxe staterooms Deck 3

Deluxe suites Deck 6

Superior staterooms Deck 3

Reservations and payments

Bookings must be made with a Travel Agent. On confirmation of your booking, a written confirmation will be sent to your Travel Agent. An option will be given for 7 days or by 14th of January 2022, whichever occurs first. Before the option expires it will be necessary for you to pay a deposit of 20% of the holiday price. The deposit secures your holiday as requested. Failure to pay the deposit by the option due date may result in the cancellation of your booking.

A second deposit of 55% must be made no later than the 11th of March 2022.

Final payment is due by the 10th of October 2022.

Fares

The fares quoted in this brochure are shown in Australian dollars and are based on a twin sharing basis and include accommodations, included zodiac shore excursion program, onboard meals and entertainment, and complimentary beverages, flights and transfers as specified. All rates are subject to change with or without notice.

What's NOT included in your holiday price

Passport and visa fees, insurances of all kinds, optional premium shore excursions and overland excursions, meals ashore, fuel surcharges, laundry (unless otherwise noted), phone calls, beverages not listed in the inclusions, and items of a personal nature are not included in the holiday costs advertised in this brochure. Departures from Adelaide depart on 19 January 2023 and will require an overnight stop in Auckland for an additional cost.

Guests will not accrue Ponant Yacht Club points during this voyage. Selected PONANT Yacht Club Privileges will not be extended to guests travelling on this voyage.

Travel documentation

Travel documents will be sent to you approximately 21 days prior to departure from Australia (providing full payment has been received). If you are departing Australia earlier, please ask your Travel Agent to request your travel documents in good time.

Booking changes and cancellations

In the unfortunate event that you should have to cancel your holiday, we must be notified in writing. The day that we receive this notice in writing, will be considered the date that your cancellation has been made. Certain cancellation fees apply to your holiday if cancelled after a deposit or final payment has been made.

Cancellations and cancellation fees

Notice of cancellation must be made in writing to your Travel Agent. The following scale of charges (includes GST) will apply when notice of cancellation is given prior to sailing.

Cancellation Date:	Cancellation charge:
Day of deposit until 14 January 2022	Fully refundable
15 January 2022 until 11 March 2022	10% of total holiday cost
12 March 2022 - 11 July 2022	50% of total holiday cost
12 July 2022 - 9 October 2022	75% of total holiday cost
10 October 2022 to day of departure or no show	100% of total holiday cost

Itinerary variations

Sometimes the impact of weather or other conditions will require alterations to the itinerary which may result in tours being missed. In such instances all attempts will be made to make up the tour or substitute it. Every effort will be made to keep itineraries as planned, however itineraries are subject to change without notice and any changes to the itineraries will not result in eligibility for a refund, or compensation of any kind.

Other conditions

It is your responsibility to ensure you have read all of the Booking Conditions and to provide valid travel documents. Be sure to ask your Travel Agent for advice concerning passport and visa requirements.

Booking arrangements

Your booking arrangements are to be made by your Travel Agent, and the person effecting the booking shall be deemed to have accepted the booking conditions.

All information in this brochure is true and correct as at 2 December 2021. Cruiseeco reserves the right to correct errors or omissions and to change any and all fares, fees, promotions, surcharges, amenities, services and features at any time.

This cruise holiday is promoted by Viva Holidays PTY LTD trading as Cruiseeco and Seven Oceans Cruising ABN 634 662 294.

